

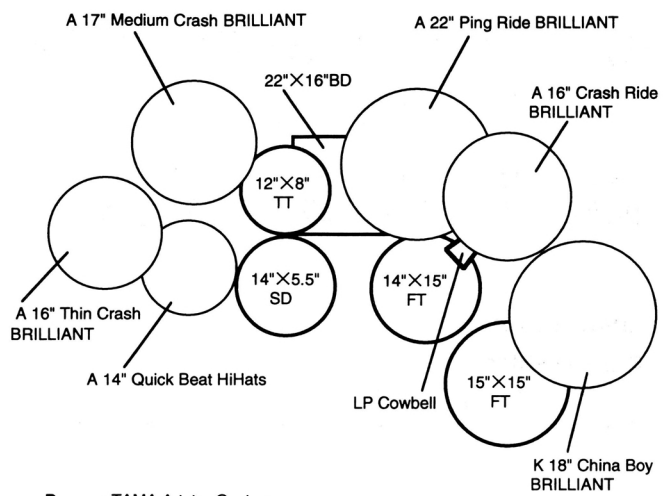
PAT TORPEY'S

MR. BIG



special appearance by Billy Sheehan

RittorMusic



- Drums :** TAMA Artstar Custom
- Cymbals :** ZILDJIAN
- Snare :** TAMA Stainless Steel with Star-Cast AIR RIDE Mounting System
- Pedals :** TAMA IRON COBRA HP90TW
- Sticks :** PRO-MARK Pat Torpey Signature Model
- Heads :** REMO Coated Ambassador (TT & FT top)
Ebony Ambassador (TT & FT & BD bottom)
Clear Ambassador (BD top)
CS Coated (SD top)
Snare-Side Ambassador (SD bottom)

R L R L ~

Musical notation for the R L R L pattern, featuring a bass clef, a 6/8 time signature, and a series of eighth notes with accents and slurs. The pattern is repeated across two measures.

RLLRLL ~

Musical notation for the RLLRLL pattern, featuring a bass clef, a 6/8 time signature, and a series of eighth notes with accents and slurs. The pattern is repeated across two measures.

BD + foot HH

H.H.(foot)
B.D.

Musical notation for the BD + foot HH pattern, featuring a bass clef, a 6/8 time signature, and a series of eighth notes with accents and slurs. The pattern is repeated across two measures.

Musical notation for the BD + foot HH pattern, featuring a bass clef, a 6/8 time signature, and a series of eighth notes with accents and slurs. The pattern is repeated across two measures.

BD + foot HH + SD

Musical notation for the BD + foot HH + SD pattern, featuring a bass clef, a 6/8 time signature, and a series of eighth notes with accents and slurs. The pattern is repeated across two measures.

Musical notation for the BD + foot HH + SD pattern, featuring a bass clef, a 6/8 time signature, and a series of eighth notes with accents and slurs. The pattern is repeated across two measures.

BD + foot HH + SD + Ride cym.

R.H. → Ride
L.H. → S.D.

Musical notation for the BD + foot HH + SD + Ride cym pattern, featuring a bass clef, a 6/8 time signature, and a series of eighth notes with accents and slurs. The pattern is repeated across two measures.

Musical notation for the BD + foot HH + SD + Ride cym pattern, featuring a bass clef, a 6/8 time signature, and a series of eighth notes with accents and slurs. The pattern is repeated across two measures.

RLLRLLR L R

Musical notation for the RLLRLLR L R pattern, featuring a bass clef, a 6/8 time signature, and a series of eighth notes with accents and slurs. The pattern is repeated across two measures.

R

Musical notation for the R pattern, featuring a bass clef, a 6/8 time signature, and a series of eighth notes with accents and slurs. The pattern is repeated across two measures.

Drum Pattern of "Take Cover"

RR LR RR RLRR RR LR RR RLRR

RR LR RR RLRR RR LR RR RLRR

RR LR RR RLRR RR LR RR RLRR

RR LR RR RLRR RR LR RR RLRR R

Variation

R.H. → Ride Bell

L.H. → S.D.

LRLRL

R

Rhythm Pattern of "Take Cover"

RR LR RR RLRR RR LR RR RL

Musical notation for the first rhythm pattern of "Take Cover". It consists of two measures of music in 4/4 time. The first measure contains four eighth notes with accents, and the second measure contains four eighth notes with accents. Above the notes are the letters R and L indicating foot placement: RR LR RR in the first measure and RR LR RR RL in the second measure.

L R LR RR RLRR RR LR RR RLRR

Musical notation for the second rhythm pattern of "Take Cover". It consists of two measures of music in 4/4 time. The first measure contains four eighth notes with accents, and the second measure contains four eighth notes with accents. Above the notes are the letters L and R indicating foot placement: L R LR RR in the first measure and RR LR RR RLRR in the second measure.

RR LR RR RLRR RR LR RR RLRR

Musical notation for the third rhythm pattern of "Take Cover". It consists of two measures of music in 4/4 time. The first measure contains four eighth notes with accents, and the second measure contains four eighth notes with accents. Above the notes are the letters R and L indicating foot placement: RR LR RR RLRR in the first measure and RR LR RR RLRR in the second measure.

LRR LR RR RLRR

Musical notation for the fourth rhythm pattern of "Take Cover". It consists of two measures of music in 4/4 time. The first measure contains four eighth notes with accents, and the second measure contains four eighth notes with accents. Above the notes are the letters L and R indicating foot placement: LRR LR RR in the first measure and RLRR in the second measure.

<BASIC FOOTWORK>

Slide Exercise

H.H.

Musical notation for the Slide Exercise. It shows a bass clef with a treble clef sign above it. The first measure contains four eighth notes with accents, and the second measure contains four eighth notes with accents. Above the notes are the letters H and H indicating heel placement. Below the notes are the letters B.D. and the number 3, indicating a double bass slide exercise.

Heel & Toe

Musical notation for the Heel & Toe exercise. It consists of two measures of music in 4/4 time. The first measure contains four eighth notes with accents, and the second measure contains four eighth notes with accents. Above the notes are the letters H and T indicating heel and toe placement. Below the notes are the letters H T H T H T H T T T, indicating the sequence of heel and toe placements.

Musical notation for the Heel & Toe exercise. It consists of two measures of music in 4/4 time. The first measure contains four eighth notes with accents, and the second measure contains four eighth notes with accents. Above the notes are the letters H and T indicating heel and toe placement. Below the notes are the letters H T H T H T H T T T, indicating the sequence of heel and toe placements.

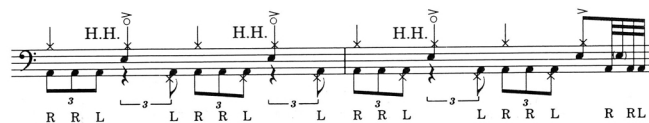
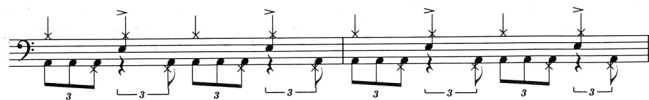
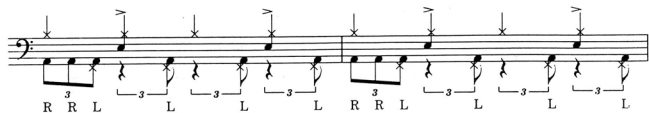
Musical notation for the Heel & Toe exercise. It consists of two measures of music in 4/4 time. The first measure contains four eighth notes with accents, and the second measure contains four eighth notes with accents. Above the notes are the letters H and T indicating heel and toe placement. Below the notes are the letters H T H T H T H T T T, indicating the sequence of heel and toe placements.

Ride-

The 'Ride' pattern is a rhythmic sequence of eighth notes. The first five staves show a repeating pattern of eighth notes with accents and beams. The sixth staff shows a variation with a triplet of eighth notes and a final eighth note.

Rhythm Pattern of "Colorado Bulldog"

The 'Colorado Bulldog' rhythm pattern is a sequence of eighth notes. The first five staves show a repeating pattern of eighth notes with accents and beams, including triplet markings. The sixth staff shows a variation with a triplet of eighth notes and a final eighth note.



●——ドラム・ソロのコピー譜（抜粋）はリズム&ドラム・マガジン97年1月号に、ビリー・シーンとのジャム・セッションのコピー譜はリズム&ドラム・マガジン97年2月号に掲載されています。

●——採譜：山本雄一
 ●——譜面製作：アルスノヴァ
 ●——企画制作／発売元：**リットミュージック**

※無断複製・転載を禁ずる